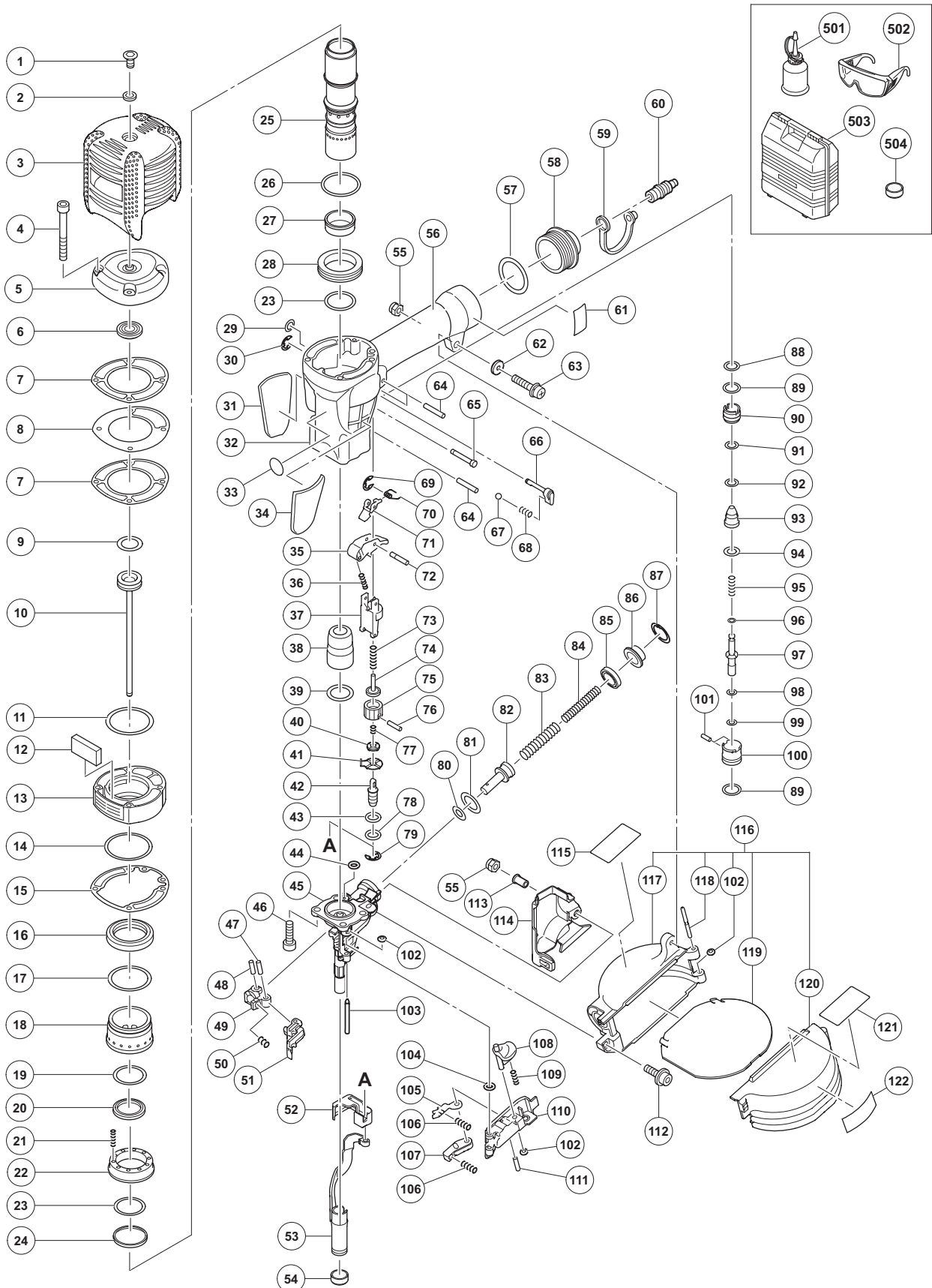


## PNEUMATIC TOOL PARTS LIST

### ■ HIGH PRESSURE CONCRETE COIL NAILER 2012-5-21 Model NC 50H (E1)



## PARTS

NC 50H

ITEM NO.	CODE NO.	DESCRIPTION	NO USED	REMARKS
1	885-265	HEX. SOCKET FLAT HD. SCREW M5 X 10	1	
2	885-264	WASHER	1	
3	885-593	HEAD GUARD	1	
4	883-403	NYLOCK BOLT M5 X 55	4	
5	886-632	UPPER COVER (GOLD)	1	
6	883-423	HEAD BUMPER	1	
7	883-130	GASKET (B)	2	
8	883-132	PLATE	1	
9	885-253	PISTON O-RING	1	
10	885-597	PISTON (H)	1	
11	883-401	O-RING (I.D 45.5)	1	
12	883-402	MUFFLER (A)	1	
13	886-634	EXHAUST COVER (GOLD)	1	
14	980-715	O-RING (S-48)	1	
15	885-188	GASKET (C)	1	
16	883-121	SLEEVE VALVE RUBBER	1	
17	885-678	O-RING (I.D 41.5) FKM	1	
18	883-118	SLEEVE VALVE	1	
19	885-679	O-RING (I.D 35.5) FKM	1	
20	883-120	EXHAUST RUBBER	1	
21	883-123	SLEEVE VALVE SPRING	10	
22	885-861	VALVE PLATE	1	
23	880-865	O-RING (I.D 29.7)	2	
24	885-862	CYLINDER BUMPER	1	
25	885-863	CYLINDER	1	
26	883-418	O-RING (I.D 45.5)	1	
27	881-244	CYLINDER RING	1	
28	883-117	CYLINDER PLATE	1	
29	883-405	O-RING (I.D 1.8)	1	
30	968-643	RETAINING RING (E-TYPE) FOR D4 SHAFT	1	
31		HITACHI LABEL (D)	1	
32	887-976	BODY ASS'Y	1	INCLUD. 56
33	883-513	WARNING LABEL (A)	1	
34		HITACHI LABEL (C)	1	
35	886-052	TRIGGER (S)	1	
36	884-916	TRIGGER SPRING	1	
37	886-047	PUSHING LEVER GUIDE	1	
38	885-254	PISTON BUMPER	1	
39	980-879	O-RING (S-34)	1	
40	884-973	ADJUSTER PLATE (C)	1	
41	882-886	ADJUSTER PLATE (A)	1	
42	882-888	PUSHING LEVER (B)	1	
43	981-317	O-RING (S-4)	1	
44	873-093	O-RING (1AP-3)	1	
45	886-050	NOSE	1	
46	993-040	NYLOCK HIGH TENSION BOLT M7 X 25	4	
47	883-093	PLUNGER (B)	1	
48	949-497	ROLL PIN D4 X 16 (10 PCS.)	1	
49	883-144	FEEDER ARM (B)	1	
50	883-143	FEEDER SPRING	1	

**PARTS**

NC 50H

ITEM NO.	CODE NO.	DESCRIPTION	NO. USED	REMARKS
51	885-604	FEEDER	1	
52	883-113	PUSHING LEVER COVER (B)	1	
53	886-058	PUSHING LEVER (A)	1	
54	886-057	NOSE CAP	1	
55	877-371	NYLON NUT M5	2	
56		GRIP RUBBER (A)	1	SUPPLIED WITH ITEM NO. 601, 602
57	880-183	O-RING (I.D 37.2)	1	
58	886-426	CAP (GOLD)	1	
59	877-914	DUST CAP	1	
60	883-135	AIR PLUG L-PT 1/4	1	
61		CAUTION PLATE (C)	1	
62	886-059	SLEEVE (A)	1	
63	885-266	MACHINE SCREW (W/WASHERS) M5 X 35 (BLACK)	1	
64	949-865	ROLL PIN D3 X 28 (10 PCS.)	4	
65	885-268	TRIGGER PIN	1	
66	885-865	LOCK KNOB (A)	1	
67	959-148	STEEL BALL D3.175 (10 PCS.)	1	
68	882-923	LOCK SPRING	1	
69	886-056	RETAINING RING (E-TYPE) FOR D1.5 SHAFT	1	
70	886-054	SPRING (S)	1	
71	886-053	TRIGGER ARM (S)	1	
72	886-055	TRIGGER ARM PIN	1	
73	883-305	PUSHING LEVER SPRING (A)	1	
74	882-891	PUSHING LEVER (C)	1	
75	882-889	ADJUSTER	1	
76	880-093	ROLL PIN D2 X 16	1	
77	882-890	ADJUSTER SPRING	1	
78	872-822	O-RING (S-5)	1	
79	872-971	RETAINING RING (E-TYPE) FOR D3 SHAFT	1	
80	872-645	O-RING (P-9)	1	
81	877-763	FEED PISTON O-RING (I.D. 14)	1	
82	883-094	FEED PISTON	1	
83	883-095	FEED SPRING (A)	1	
84	883-096	FEED SPRING (B)	1	
85	885-681	BUMPER	1	
86	883-098	FEED PISTON COVER	1	
87	983-748	RETAINING RING FOR D24 HOLE	1	
88	876-319	O-RING (S-14)	1	
89	876-031	O-RING (S-16)	2	
90	883-100	VALVE BUSHING (B)	1	
91	883-105	O-RING (P7-U)	1	
92	883-104	O-RING (P9-U)	1	
93	883-101	VALVE PISTON	1	
94	878-764	O-RING (1AP-11)	1	
95	883-103	PLUNGER SPRING	1	
96	883-405	O-RING (I.D 1.8)	1	
97	886-051	PLUNGER (S)	1	
98	873-407	O-RING (1AP-5)	1	
99	997-218	O-RING (S-6)	1	
100	883-099	VALVE BUSHING (A)	1	

**PARTS**

NC 50H

ITEM NO.	CODE NO.	DESCRIPTION	NO USED	REMARKS	
101	949-778	PIN D2 X 8 (10 PCS.)	2		
102	880-319	SHAFT RING	3		
103	885-603	NAIL GUIDE SHAFT	1		
104	874-436	O-RING (P-4)	1		
105	885-601	NAIL STOPPER (A)	1		
106	885-602	STOPPER SPRING	2		
107	885-600	SHEET STOPPER	1		
108	886-107	GUIDE LOCK	1		
109	880-446	SPRING	1		
110	885-599	NAIL GUIDE	1		
111	949-900	ROLL PIN D3 X 14 (10 PCS.)	1		
112	992-253	HEX. SOCKET HD. BOLT (W/FLANGE) M5 X 25	1		
113	885-605	SLEEVE	1		
114	887-964	PUSHING LEVER COVER (A)	1		
115	887-175	WARNING LABEL	1		
116	885-612	MAGAZINE ASS'Y	1	INCLUD. 102, 117-120	
117	885-613	MAGAZINE	1		
118	883-111	PIN	1		
119	880-438	NAIL HOLDER	1		
120	885-614	MAGAZINE COVER	1		
121	887-174	WARNING LABEL	1		
122		NAME PLATE	1		

**STANDARD ACCESSORIES**

NC 50H

ITEM NO.	CODE NO.	DESCRIPTION	NO. USED	REMARKS
501	883-136	PNEUMATIC TOOL LUBRICANT (30 CC)	1	
502	875-769	SAFETY GLASSES	1	
503	886-432	CASE	1	
504	886-057	NOSE CAP	1	

**OPTIONAL ACCESSORIES**

ITEM NO.	CODE NO.	DESCRIPTION	NO. USED	REMARKS
601	881-768	GRIP TAPE (A)	1	
602	880-407	TAPE	2	
603	876-212	PNEUMATIC TOOL LUBRICANT (1 L)	1	
604	887-133	GRIP GUIDE	1	
605	887-978	HANGER PARTS SET	1	