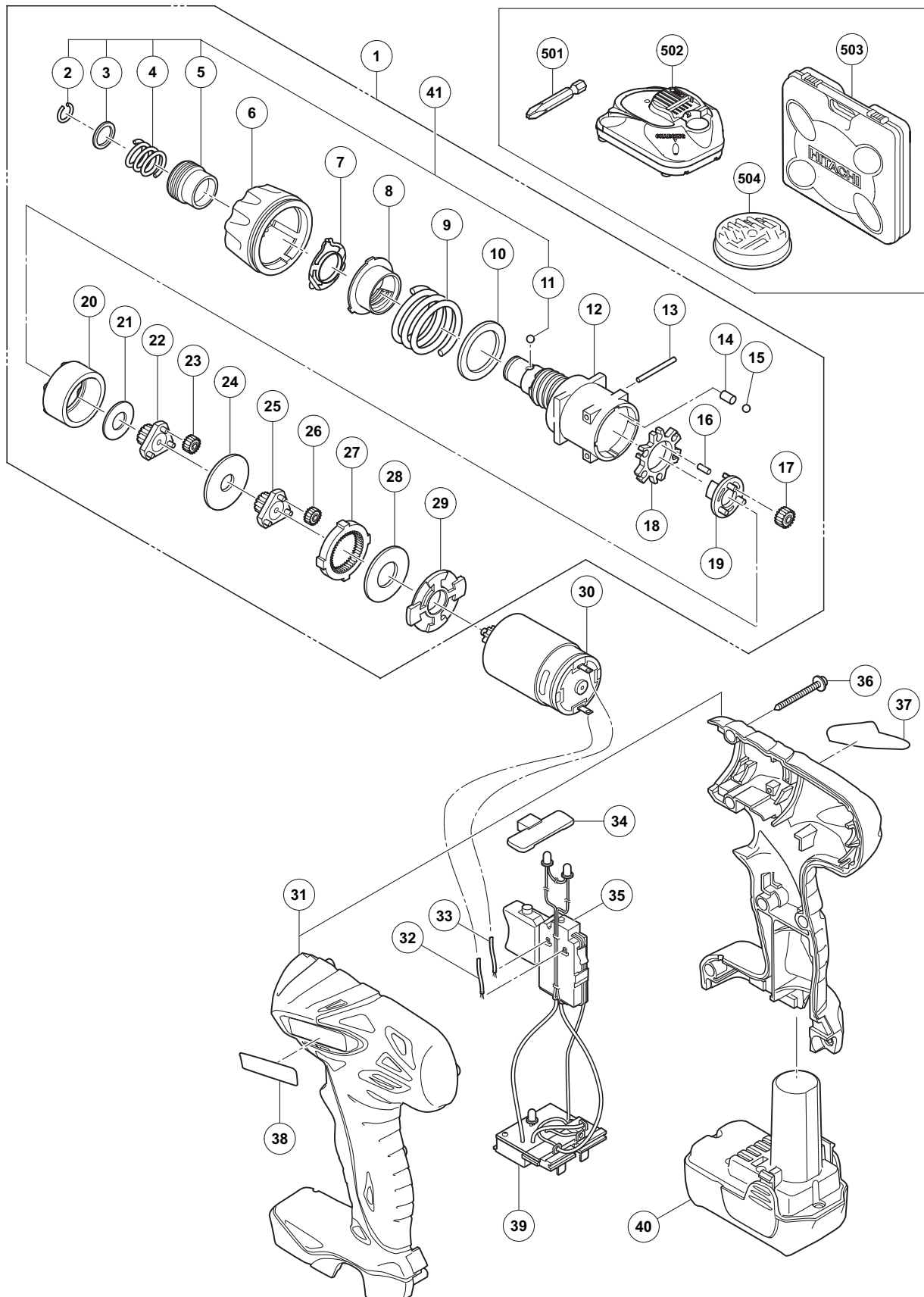


## ELECTRIC TOOL PARTS LIST

**CORDLESS DRIVER DRILL**  
**Model DB 10DL**

**2008·2·14**  
**(E1)**



**PARTS**

DB 10DL

ITEM NO.	CODE NO.	DESCRIPTION	NO. USED	REMARKS
1	329-557	GEAR BOX ASS'Y	1	INCLUD. 2-29
2	315-984	RETAINING RING	1	
3	315-983	WASHER (D)	1	
4	320-409	GUIDE SPRING	1	
5	319-921	GUIDE SLEEVE (A)	1	
6	329-578	CLUTCH DIAL	1	
7	329-579	CLICK SPRING	1	
8	329-577	NUT	1	
9	329-576	SPRING	1	
10	329-575	WASHER (D)	1	
11	319-535	STEEL BALL D3.5 (10 PCS.)	1	
12	329-558	GEAR CASE	1	
13	329-565	NEEDLE	2	
14	329-574	PIN SET (6 PCS.)	6	
15	321-905	STEEL BALL D4 (10 PCS.)	6	
16	329-560	NEEDLE ROLLER SET (6 PCS.)	6	
17	329-563	PLANET GEAR (C) SET (3 PCS.)	3	
18	329-559	LOCK RING	1	
19	329-561	CARRIER	1	
20	329-562	RING GEAR	1	
21	329-564	WASHER (C)	1	
22	329-566	PINION (C)	1	
23	329-568	PLANET GEAR (B) SET (3 PCS.)	3	
24	329-567	WASHER (B)	1	
25	329-569	PINION (B)	1	
26	329-571	PLANET GEAR (A) SET (3 PCS.)	3	
27	329-570	FIRST RING GEAR	1	
28	329-572	WASHER (A)	1	
29	329-573	MOTOR SPACER	1	
30	329-582	MOTOR	1	
31	329-556	HOUSING (A). (B) SET	1	
32	329-584	INTERNAL WIRE (BLACK)	1	
33	329-583	INTERNAL WIRE (RED)	1	
34	329-548	PUSHING BUTTON (A)	1	
35	329-581	DC-SPEED CONTROL SWITCH	1	
36	313-687	TAPPING SCREW (W/FLANGE) D3X16 (BLACK)	7	
37		NAME PLATE	1	
38		HITACHI LABEL	1	
39	329-580	CONTROLLER (B)	1	
* 40	329-371	BATTERY BCL 1015 (EUROPE, AUS, NZL)	2	
* 40	329-370	BATTERY BCL 1015 (USA, CAN)	2	
* 40	329-369	BATTERY BCL 1015 (CHN)	2	
* 40	329-389	BATTERY BCL 1015 (TPE)	2	
41	320-085	GUIDE SLEEVE SET	1	INCLUD. 2-5, 11

**STANDARD ACCESSORIES**

DB 10DL

ITEM NO.	CODE NO.	DESCRIPTION	NO. USED	REMARKS
501	992-671	+ DRIVER BIT (B) NO.2 50L	1	
502		CHARGER (MODEL UC 10SFL)	1	
503	329-585	CASE	1	
504		BIT SET	1	FOR USA, CAN

**OPTIONAL ACCESSORIES**

ITEM NO.	CODE NO.	DESCRIPTION	NO. USED	REMARKS
601	992-670	+ DRIVER BIT (B) NO.1 50L	1	
602	992-672	+ DRIVER BIT (B) NO.3 50L	1	
603	321-823	DRILL CHUCK AND ADAPTER SET	1	INCLUD. 604, 605
604	307-543	CHUCK ADAPTER	1	
605	987-575	CHUCK WRENCH FOR 10VLB-D, 10VLR-D	1	